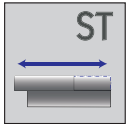
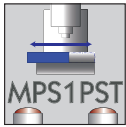
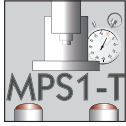


PNEUMATIC TOGGLE PRESSES

The accessories

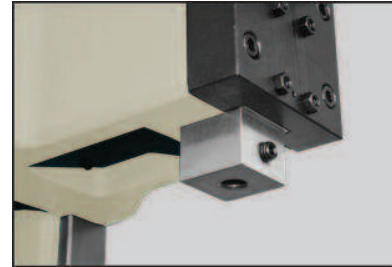
XL-APK L and XL-VKL series



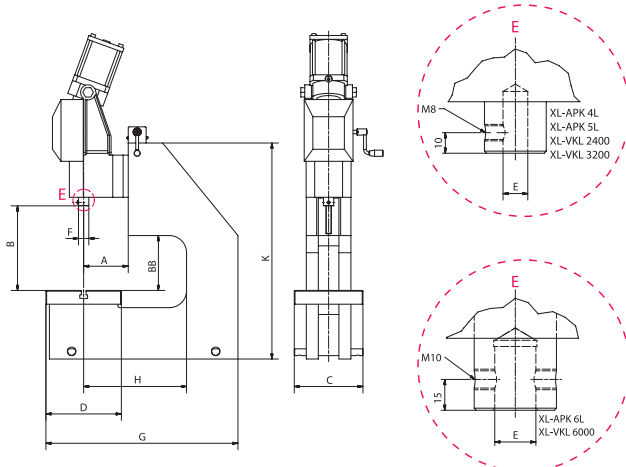
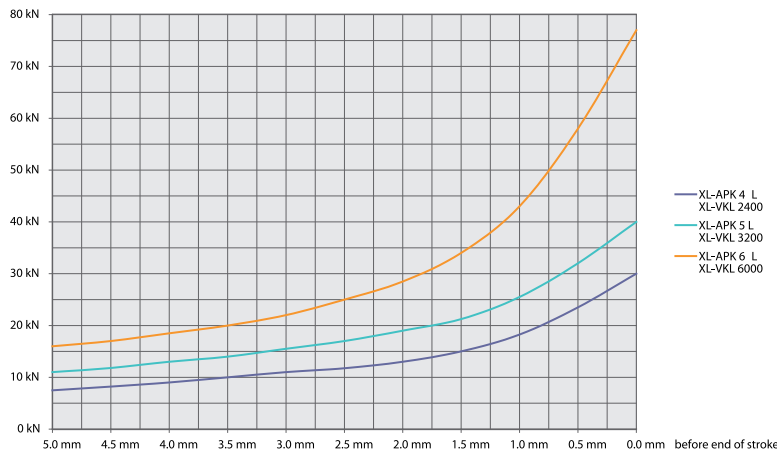
Presses with XL throat are designed for processing large and bulky parts. The press stand consists of a stable welded structure which can be modified to suit customers' requirements. XL pneumatic toggle presses can be provided with the standard Baltec IPC controller or with customer specified controllers.

Other quality features:

- Factory pre-set pressure point
- Right-angled gearbox for simple height adjustment of the press head
- Side-mounted measuring strip for fast reproduction of settings when changing the tool
- Practically maintenance-free double-acting cylinder
- Low noise: less than 75 dB



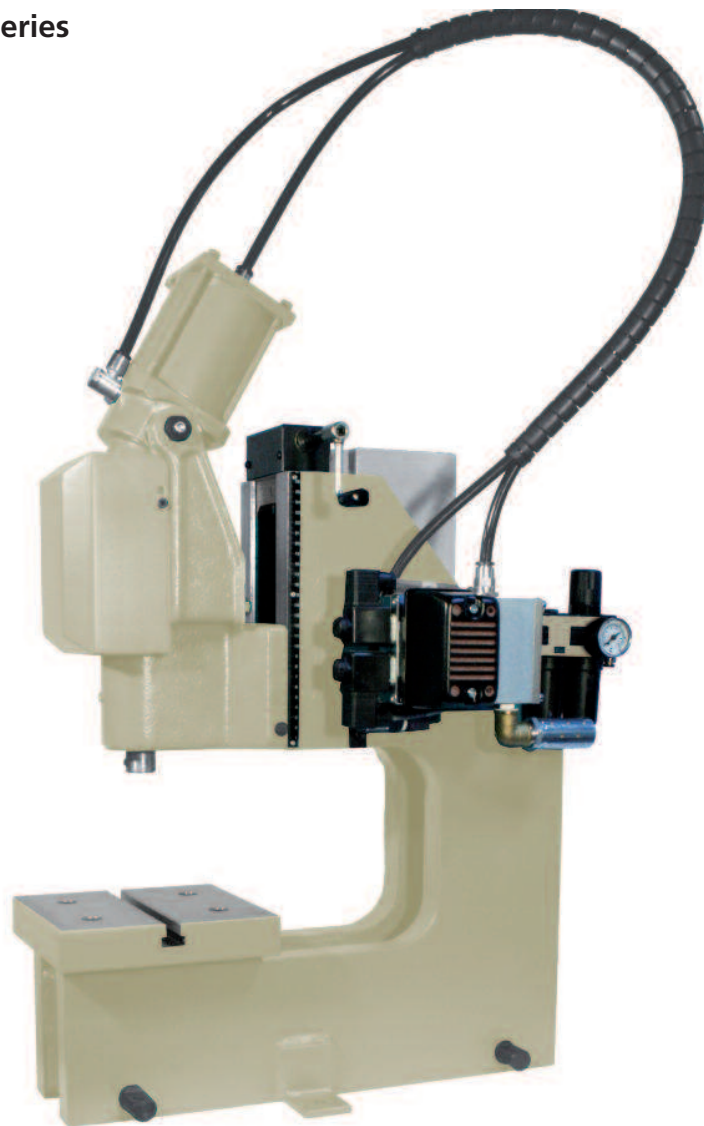
Square ram



PNEUMATIC TOGGLE PRESSES

BalTec

XL-APK L and XL-VKL series



XL-APK 4L

Type			XL-APK 4 L	with round ram XL-APK 5 L	XL-APK 6 L	XL-VKL 2400-40-300	with square ram XL-VKL 3200-40-300	XL-VKL 6000-40-300
Capacity		kN	24	32	60	24	32	60
Working stroke		mm	40	40	40	40	40	40
Throat	A	mm	130	130	150	130	130	150
Throat C-frame	H	mm	300	300	300	300	300	300
Daylight	B	mm	130-280	130-280	130-230	130-280	130-280	130-230
Daylight C-frame	BB	mm	158	158	190	158	158	190
Table size	CxD	mm	200x220	200x220	310x220	200x220	200x220	310x220
T-slot width similar to DIN 650		mm	14	14	16	14	14	16
Ram bore Ø x Depth	E	mm	12 ^{H7} x30	12 ^{H7} x30	20 ^{H7} x34	12 ^{H7} x30	12 ^{H7} x30	20 ^{H7} x34
Ram bore Ø x Ram area	F	mm	30	30	40	30	30	40
Port size			G 3/8"	G 3/8"	G 3/8"	G 3/8"	G 3/8"	G 3/8"
Air consumption/cm cyl. stroke		l	1.05	1.05	1.65	1.05	1.05	1.65
Space requirement	C x G	mm	200x560	200x560	320x610	200x560	200x560	320x610
Stand height	K	mm	630	630	630	630	630	630
Weight		kg	ca.149	ca.150	ca.250	ca.149	ca.150	ca.250