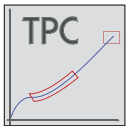
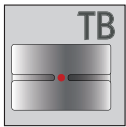
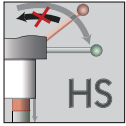
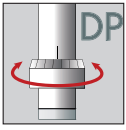


MANUAL PRESSES

The accessories



Rack-and-pinion presses with square ram VZ Series L-VZ Series with extra large daylight

The square ram has significant advantages over the round ram:

- absolute torsion resistance
- play-free movement of the press ram
- adjustable gib strips of the square ram
- large support surface for the tool
- guides on the tool are therefore usually unnecessary
- virtually maintenance-free operation

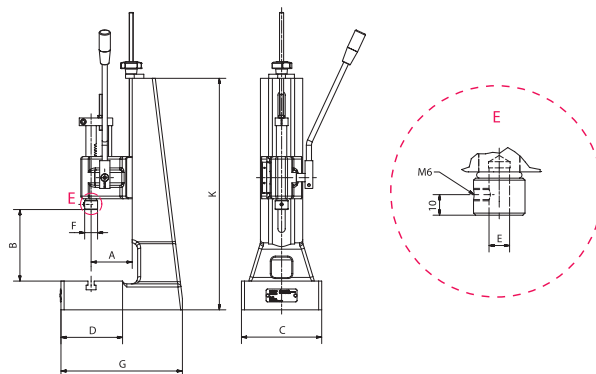
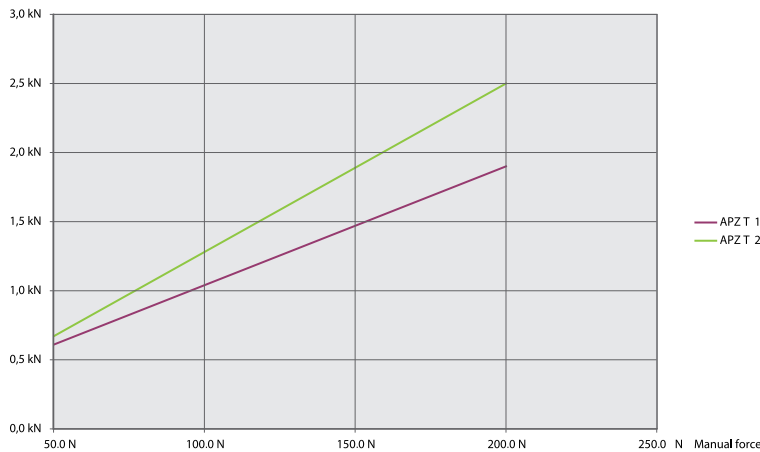
Additional standard equipment:

- height adjustment of the press head using a threaded spindle
- side-located measuring strip for repeatable accurate setting of press head
- these models can also be fitted with the usual options

Baltec rack-and pinion presses with square rams are ideal equipment for the production of high-precision small components with narrow tolerances in small and medium batches, where automation would be uneconomical.



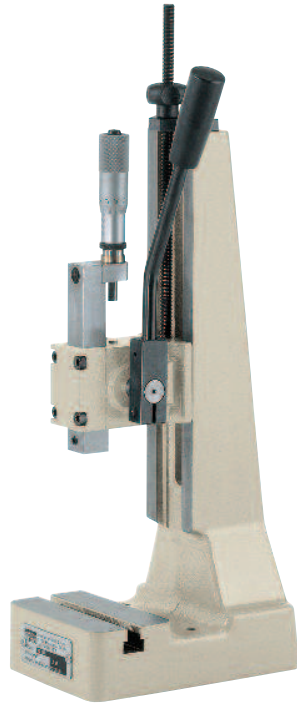
Manual lever can be refitted for right and left-handers



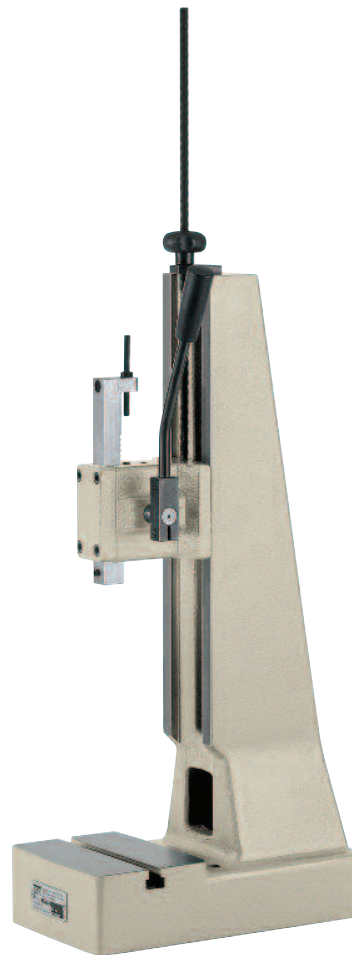
MANUAL PRESSES



Rack-and-pinion presses with square ram
VZ Series
L-VZ Series with extra large daylight

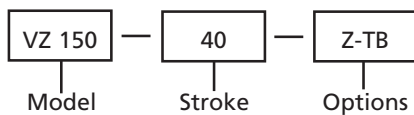


VZ 150-40
with MICRO accessory



L-VZ 250-50

ORDER EXAMPLE



Type			VZ 150-40	VZ 150-90	VZ 250-50	VZ 250-100	L-VZ 250-50	L-VZ 250-100
Capacity		kN	1.5	1.5	2.5	2.5	2.5	2.5
Working stroke		mm	40	90	50	100	50	100
Throat	A	mm	63	63	80	80	80	80
Daylight	B	mm	35-235	35-235	42-290	42-290	55-390	55-390
Table size	CxD	mm	110x65	110x65	157x115	157x115	157x115	157x115
T-slot width similar to DIN 650		mm	10	10	12	12	12	12
Ram bore Ø x Depth	E	mm	10 ^{H7} x25	10 ^{H7} x25	10 ^{H7} x25	10 ^{H7} x25	10 ^{H7} x25	10 ^{H7} x25
Ram area	F	mm	20X20	20X20	20X20	20X20	20X20	20X20
Space requirement	C x G	mm	110x164	110x164	157x237	157x237	155x280	155x280
Stand height	K	mm	355	355	450	450	570	570
Weight		kg	ca.8.5	ca.8.5	ca.21	ca.21	ca.29	ca.29

Accessories	Please specify when ordering						
Return travel lock	HS	HS	HS	HS	HS	HS	HS
Mikrometer	MICRO	MICRO	MICRO	MICRO	MICRO	MICRO	MICRO
Counter	Z	Z	Z	Z	Z	Z	Z
Table bore 12 ^{H7}	TB	TB	TB	TB	TB	TB	TB
Left/right-hander version*	R/L	R/L	R/L	R/L	R/L	R/L	R/L

*Can only be combined with MICRO and Z accessories.